

**NOTES:**

Sensitivity: 10' /2mm bubble movement  
 Centre Ring:  $\Phi 10.3\text{mm} \pm 0.1$  external diameter  
 Color : Black  
 Line Thickness: 0.3mm  
 Bubble:  $\Phi 9.25 \pm 0.3$  at 20° C  
 Liquid: Clear  
 Backing: Transparent  
 Case Color: Black

**SYMBOL**

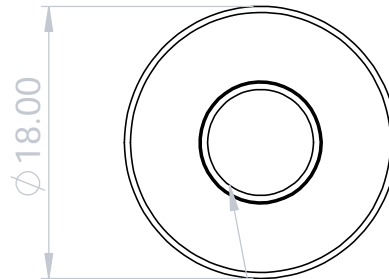
Liu

**REVISION RECORD**

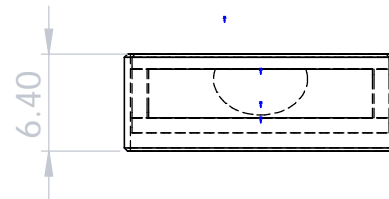
Drawn

**DATE**

2004-1-31



Bubble:  $\Phi 9.25 \pm 0.3$  at 20°C



**L.V Level Co.,Ltd**

[www.level-tool.com](http://www.level-tool.com)  
[sail@level-tool.com](mailto:sail@level-tool.com)

768#,Nanhai Road,Nantong,Jiangsu,China

Unless Otherwise Specified:Units: mm  
 Tolerances: XX. ± 1.0 | XX.X ± 0.25 | XX.XX ± 0.1

**TITLE:**  
 Circular Vial,  $\Phi 18\text{mm}$  sensitivity 10' /2mm

**MATERIAL:**  
 Vial: Glass  
 Housing: Aluminum

**SCALE:** 3:1

**DRAWN BY:**

liu

**DATE:** 2004-1-31

**DRAWING NUMBER**

GCV5571-1